



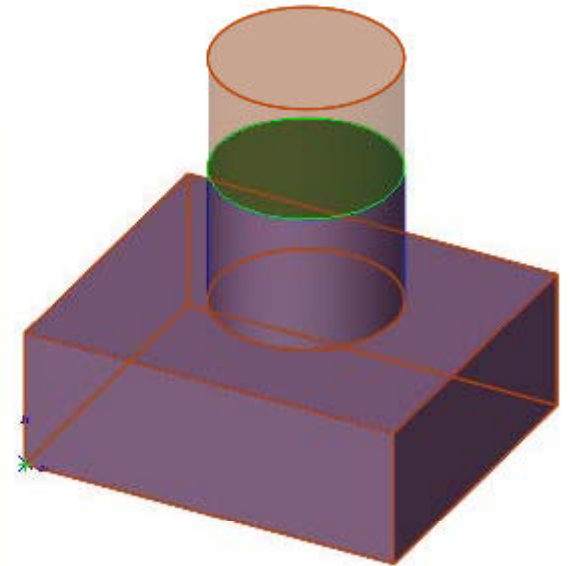
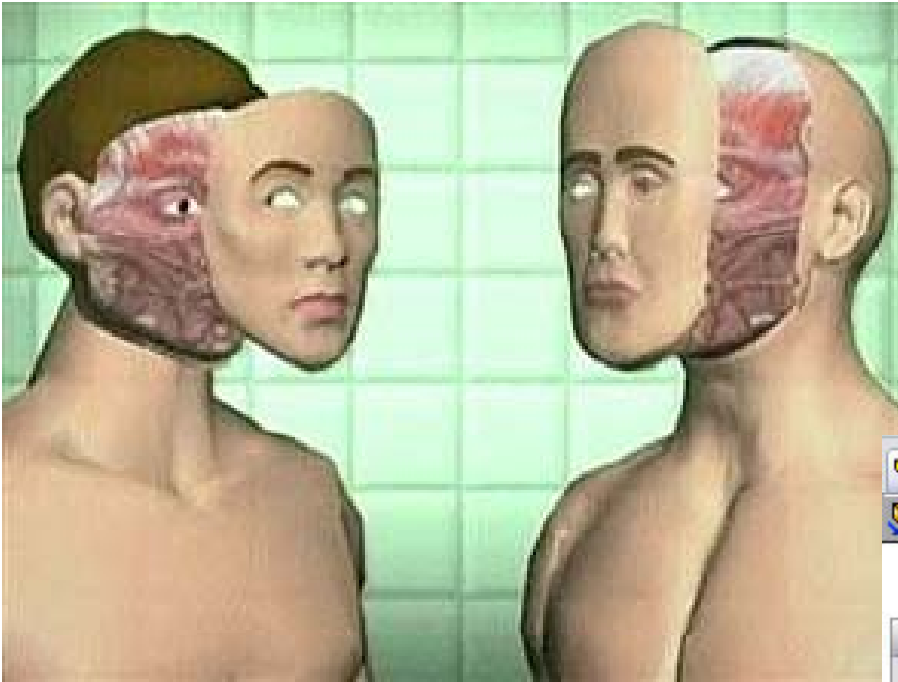
Different Strokes for handling imported 3D Data

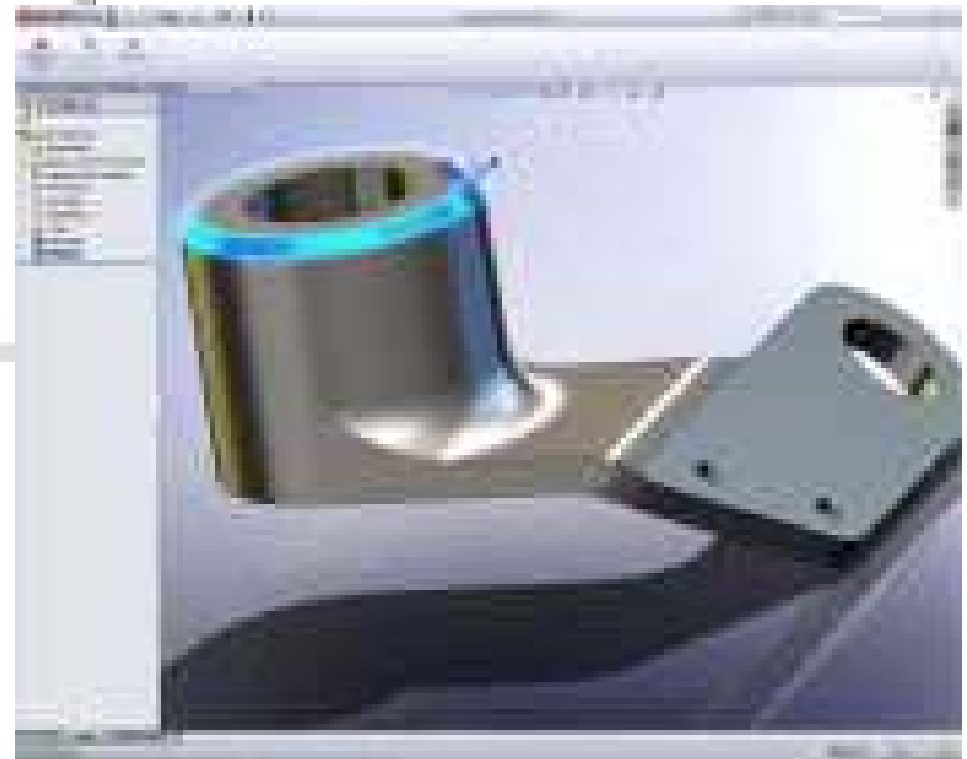
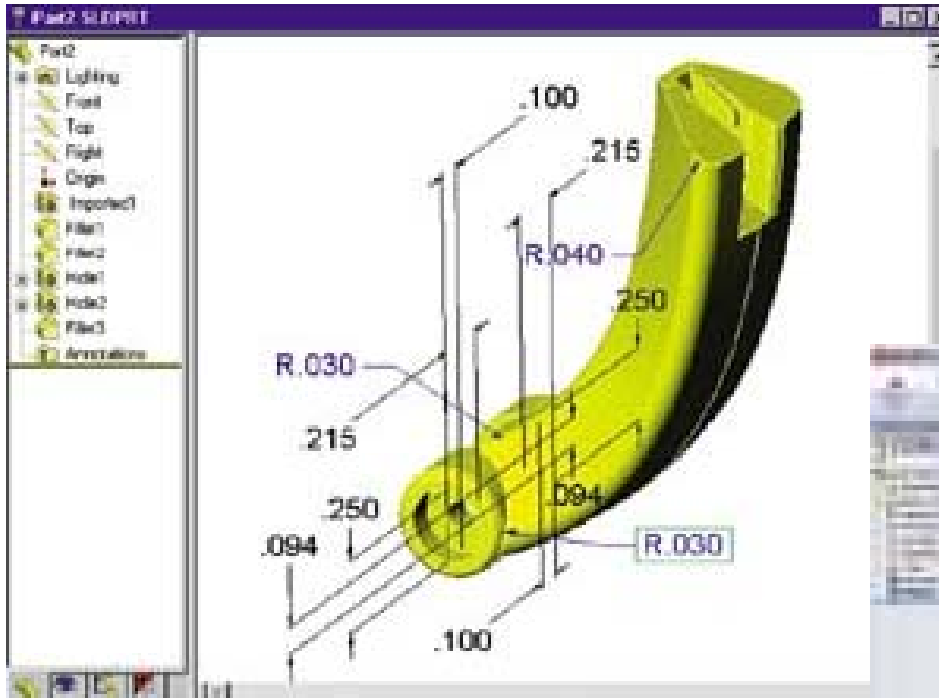
Michael LaFleche
mlafleche@solidvision.com

Butcher Approach



Move Face Approach

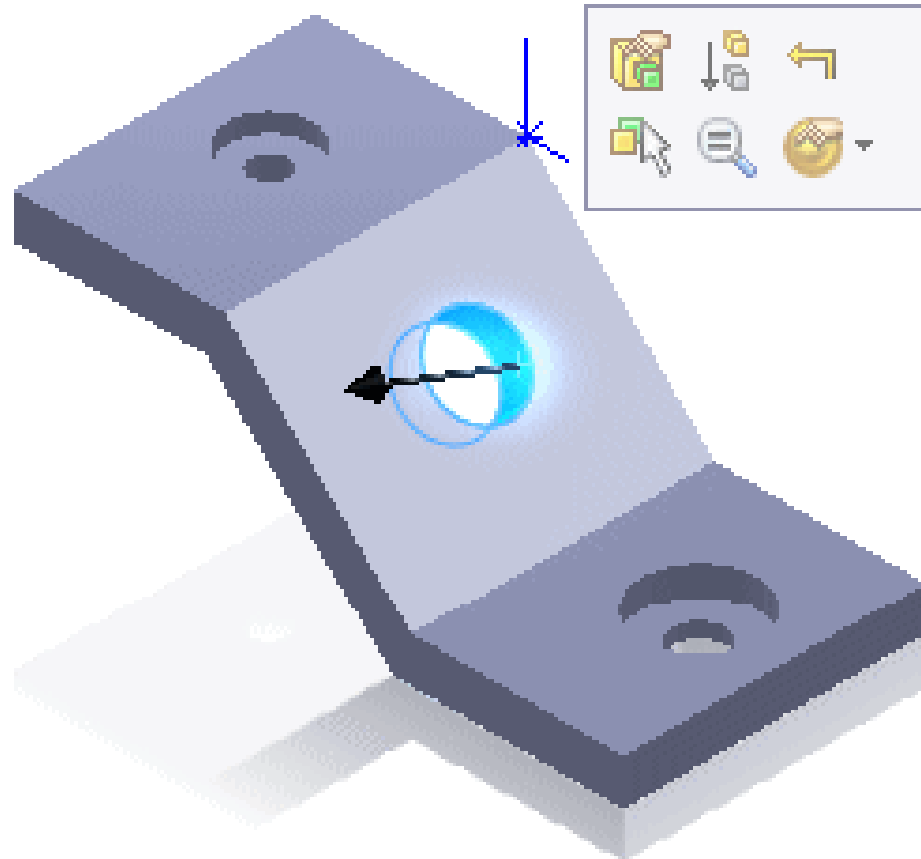




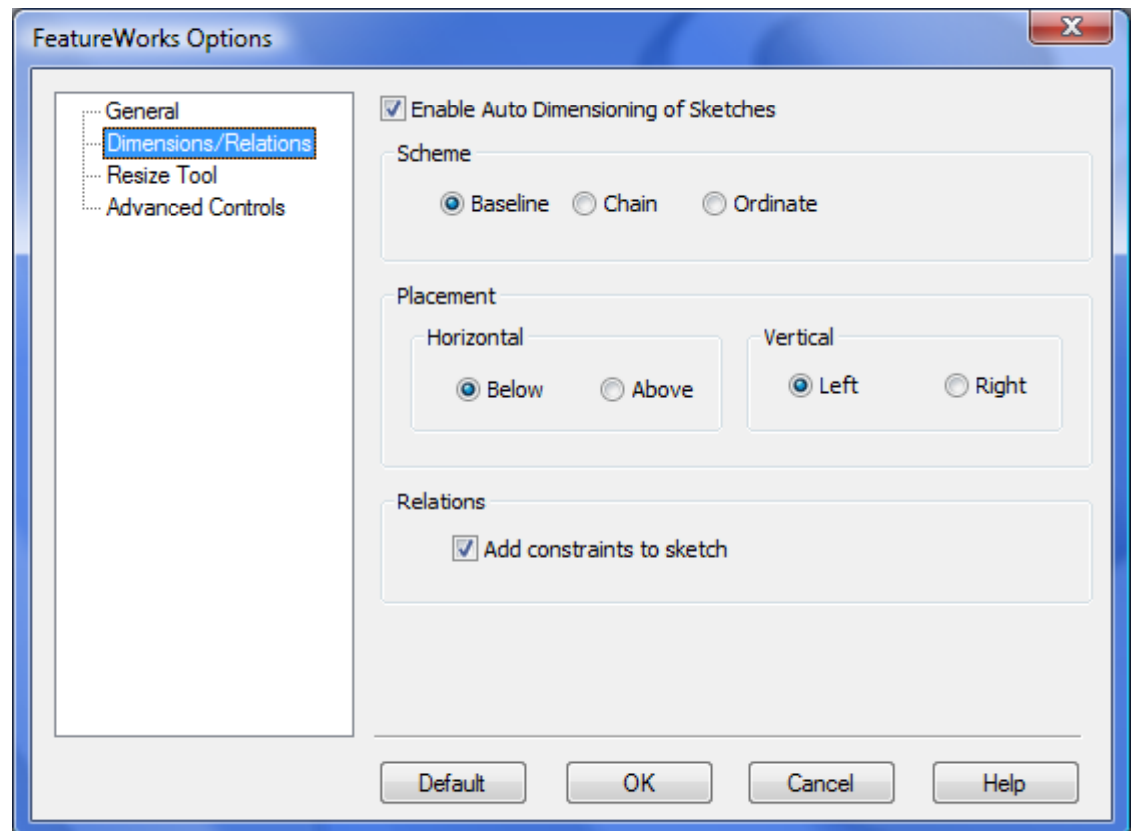
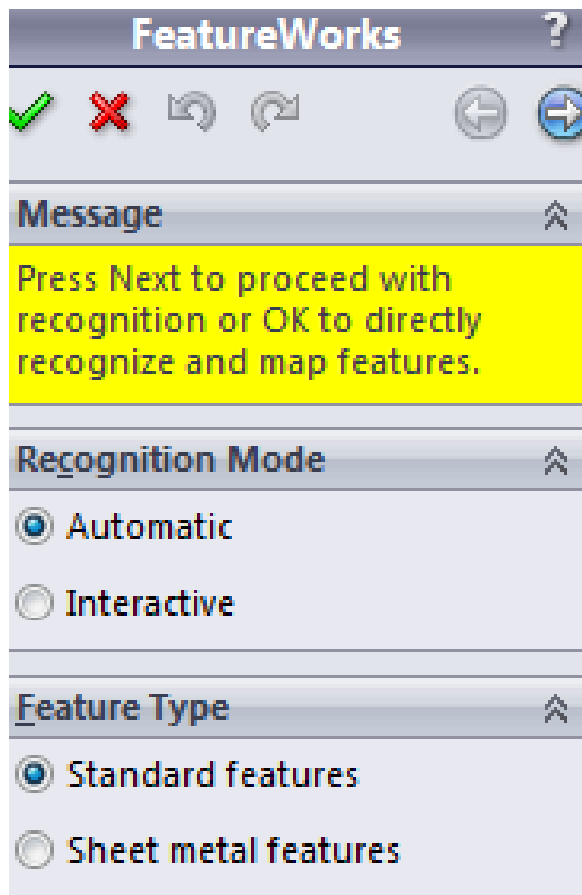
- Really Cool Edit Feature Mode
- Automatic Mode
- Manual Mode

- Really Cool Edit Feature Mode
- Automatic Mode
- Manual Mode

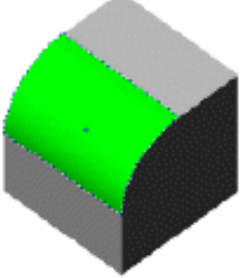
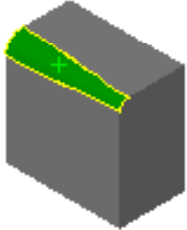
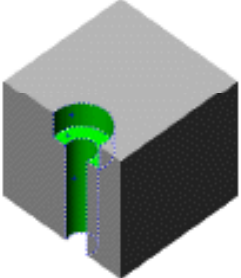
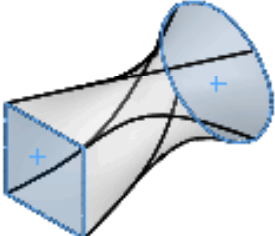
Really Cool Edit Feature Mode



Interactive and Manual Mode



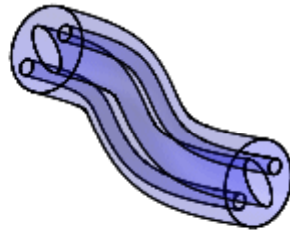
FeatureWorks

Fillet/Round	Face	Select a model face representing the filleted face.	
	Face	Select a variable radius fillet.	
Hole	Face	<p>Select the complete set of faces representing the sketch for the hole feature. FeatureWorks recognizes Hole Wizard holes.</p> <p>FeatureWorks recognizes these end conditions: Blind, Through All, and Up to Next. FeatureWorks also recognizes these end conditions when you use the resize tool.</p>	
Base-Loft	Face	Select an End Face 1 and End Face 2 .	

Base-Sweep

Face

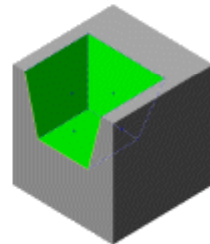
Select the face at one end of the sweep under **End Face 1**, and select the face at the other end under **End Face 2**.



Volume Features

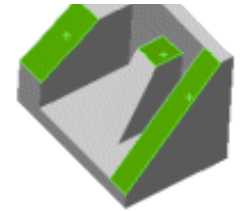
Face

Select the model faces representing the thickened surface.



Face

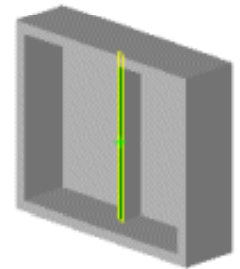
Select a face unique to the rib.



Face

Recognize ribs that are extruded using **Normal to Sketch** as the **Extrusion direction**.

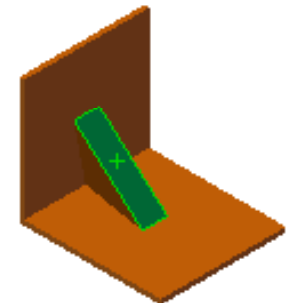
Select the face (on the rib) that was used to create the normal to sketch rib.



Face

Recognize ribs that include a negative draft.

Select a face unique to the rib.



Shell

Face

Select the face at the end of the shell feature. Only shell features with uniform thickness can be recognized. Only shell features created with an inward shell can be recognized.





Michael LaFleche

Product Specialist with SolidVision

mlafleche@solidvision.com

Follow my 3D CAD adventures on the following social networks:

SolidVision

CONTINUUM

<http://www.solidvision.com/continuum/login.php>

LinkedIn

<http://www.linkedin.com/in/mplafleche>

twitter

<http://twitter.com/mplafleche>

Blogger

<http://solidvision.blogspot.com/>